



VISHWANJALI TECHNOLOGY PVT. LTD.[®]

———— Where Technology Makes Difference ————



**Indoor & Outdoor LED Display Screen
Manufacturing company**

ABOUT US

Vishwanajali Technology Pvt. Ltd., Is the market leader for led screen & digital Signage products since 2014. We recognized in the market for making the rigid quality with rare maintenance products in all indoor & outdoor categories.

We do LED screen manufacturing, assembling, digital signage & service provider in all types of indoor and outdoor products across pan INDIA. We deal with individuals, companies & to provide them ultimate solutions for all led Screen & digital Signage with latest technology. In terms of products manufacturing we have quality testing, error deduction system with different & latest technology, machineries used for precise work to reduce the time frame. We are team of professionals & we believe on team work. We have huge production capacity for cabinet manufacturing and assembly of products with unique hierarchy of working style.

We have different department & each department handled by specialized person, it help us to make our process very smooth from purchasing raw materials, handling our clients, inside process to finished goods & timely delivery to providing the services to users. We have especial Engineers for repairing modules & provide the services to within & outside of the state. We are working in many industries like Hotel, Educational, Software Companies, Garment, Manufacturing Companies, Government projects & Tenders, Small & Big shops , Shopping Malls Etc.

VISION

To provide the platform to the needy & give more opportunities to work with us for upliftment and strengthen.
To grow as a company with latest high quality manufacturing the products & provide the ultimate Services.

MISSION

We develop advanced technology for company growth through engineering work & designs. We do manufacturing of less maintenance products with durable & more efficiently in small & big end products for individual & companies.

CORE VALUE

We believe on integrity & trust in work with the follows basic business principles which aid to our company to grow in all aspects.

PRODUCTS WE ARE DEALING WITH

- VIDEO WALLS & RENTAL SCREENS
- DIGITAL LED SIGNAGE
- LED STANDEE
- COMMERCIAL DISPLAYS
- TOUCH DISPLAYS
- NON-TOUCH DISPLAYS
- KIOSKS
- INTERACTIVE FLAT PANEL DISPLAY(IFPD)
- INTERACTIVE WHITE BOARD / INTERACTIVE DISPLAY
- DIGITAL POSTERS
- INTERACTIVE TOUCH PANEL
- SCROLLING DISPLAYS
- INDOOR, OUTDOOR, ADVERTISING DISPLAY SCREENS
- CIRCLE LED
- VMS DISPLAY BOARD
- 3D LED
- SMOOTH CURVE LED
- SHARP CURVE LED
- 3D NAKED EYE LED SCREEN
- ACTIVE PIXEL LED
- LED VAN
- MPCB DISPLAY BOARD
- CPCB DISPLAY BOARD

Indoor Pixel(P)	Outdoor Pixel(P)
P1	P10
P1.5	P8
P1.8	P6
P2	P6.6
P2.5	P5
P3	P4.8
P3.9	P4
P4	P3.91
P4.8	P3
P5	P2.5
P6	

A single-pole unipole LED screen features one display mounted on a sturdy, vertical pole. It's ideal for locations with unidirectional traffic or pedestrian flow, offering a single-sided advertising platform with high brightness for day and night visibility. The design is sleek, with a concrete foundation for stability, and supports real-time content updates.



Single Pole LED screen

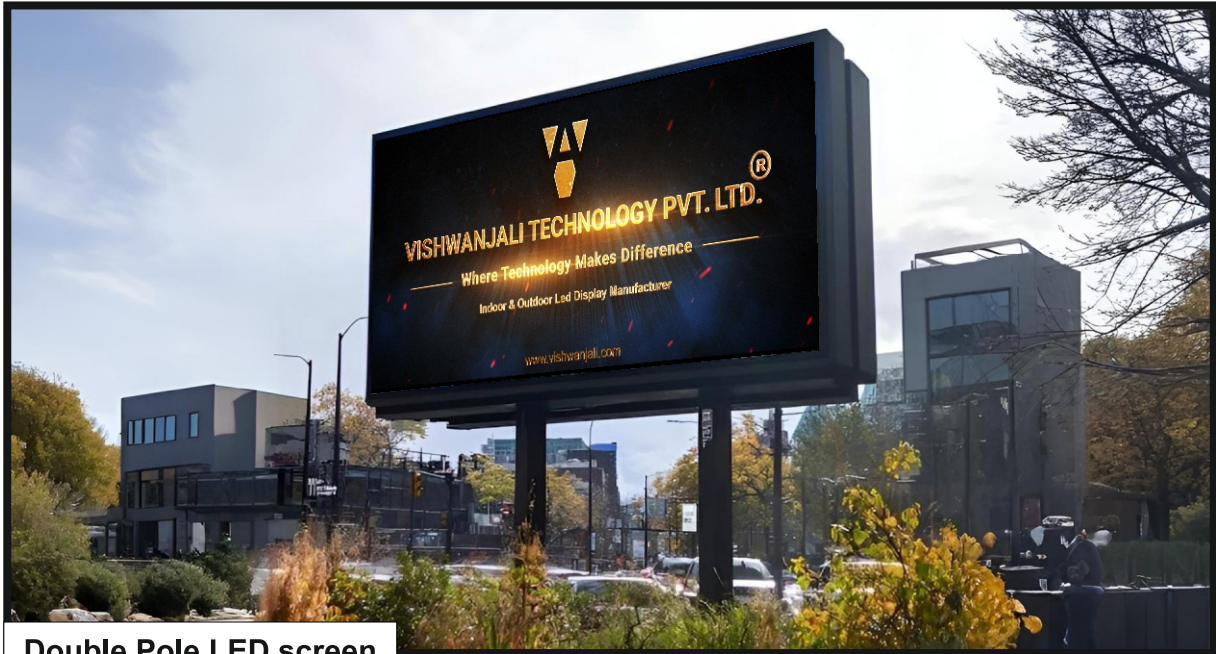
Specifications

- ❖ Pixel Pitch: P2.5, P3, P4, P5, P6.6, P8, or P10 (smaller pitch for higher resolution).
- ❖ Structure: Galvanized steel pole/Metal Steel, concrete foundation, wind resistance up to 120–150 mph
- ❖ Brightness: 6000 nits for sunlight readability.
- ❖ Power Consumption: 300–800 W/m² (average).
- ❖ IP Rating: IP65 or IP67 (weatherproof, dust-resistant).
- ❖ Lifespan: ~100,000 hours With Refresh Rate 3840-7680 hz.
- ❖ Maintenance: Front or back access
- ❖ Control: Remote via 4G/5G or Wi-Fi, with cloud-based content management.
- ❖ Viewing Angle: Up to 160° horizontal/vertical.



3/5/7 Years

A double-pole unipole LED screen uses two poles to support a larger or double-sided display, maximizing exposure for bidirectional traffic. It can feature two back-to-back screens or a V-shaped configuration for enhanced visibility from multiple angles. These are suited for high-traffic intersections or commercial hubs.



Double Pole LED screen

Specifications

- ❖ Pixel Pitch: P2.5, P3, P4, P5, P6.6, P8, or P10 (smaller pitch for higher resolution).
- ❖ Structure: Galvanized steel pole/Metal Steel, concrete foundation, wind resistance up to 120–150 mph
- ❖ Brightness: 6000 nits (auto-adjustable with light sensors).
- ❖ Resolution: E.g., P5 at 12m x 4m yields ~2,400 x 800 pixels per side.
- ❖ Power Consumption: 400–1,000 W/m² (average, higher for dual displays).
- ❖ IP Rating: IP65 or IP67 for outdoor durability.
- ❖ Lifespan: ~100,000 hours With Refresh Rate 3840-7680 hz.
- ❖ Pole Size: 3M, 5M, 7M And Customised
- ❖ Control: Remote management via 4G/5G, Wi-Fi, or wired networks.
- Viewing Angle: Up to 160° per side; V-shape may offer 360° visibility.



3/5/7 Years

3D Outdoor L Shape Curve LED Screen

A Smooth Curve LED Screen is a flexible, modular display designed to create seamless curved or cylindrical visuals for immersive experiences in settings like exhibitions, retail, stages, or architectural installations. These screens use bendable LED modules to achieve smooth, flowing curves while maintaining high-resolution imagery.



Smooth Curve LED Screen

Specifications

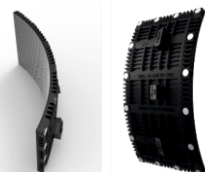
- ❖ Pixel Pitch: 1.5mm to 10mm (e.g., P1.56, P2.5, P4)
- ❖ Brightness: 6000 nits (indoor/outdoor)
- ❖ Refresh Rate: 1920–3840 Hz
- ❖ Module Flexibility: Concave/convex curves (radius as low as 0.5m)
- ❖ Weight: ~6–10 kg/m²
- ❖ Cabinet Material: Flexible PCB or lightweight aluminum
- ❖ Operating Temperature: -20°C to +50°C IP Rating: IP30 (indoor) or IP65 (outdoor)
- ❖ Installation: Magnetic mounting, hanging, or custom rigging
- ❖ Control System: NovaStar, LINSN, or equivalent Power Consumption: Avg. 60–120 W/panel



CUSTOMISED SMOOTH CURVED
(960 x 960. mm)



ALUMINIUM DIE CASTING
(960 x 960. mm)



3D Outdoor L Shape Curve LED Screen

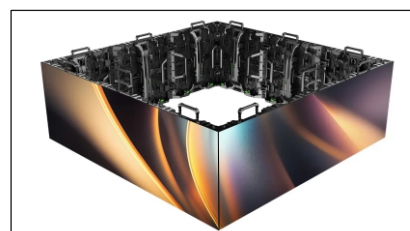
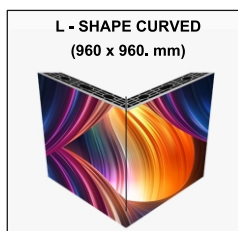
A Sharp Curve LED Screen is a specialized display designed to form tight, precise curves or angles, enabling dynamic, non-linear configurations for applications like immersive installations, retail displays, gaming arenas, or creative stage designs. These screens use advanced flexible or modular LED technology to achieve sharp bends while delivering vibrant, high-quality visuals.



Sharp Curve LED Screen

Specifications

- ❖ Pixel Pitch: 1.2mm to 8mm (e.g., P1.5, P2.6, P3.9)
- ❖ Brightness: 6000 nits (indoor/outdoor)
- ❖ Refresh Rate: 1920–3840 Hz
- ❖ Weight: ~6–12 kg/m²
- ❖ Cabinet Material: Flexible PCB, die-cast aluminum, or custom frames
- ❖ Curving Capability: Tight radius (as low as 0.3m); supports concave/convex or 90° corners
- ❖ Operating Temperature: -20°C to +50°C IP Rating: IP30 (indoor) or IP65 (outdoor)
- ❖ Installation: Magnetic connectors, truss, or custom mounting
- ❖ Control System: NovaStar, Colorlight, or similar
- ❖ Power Consumption: Avg. 50–130 W/panel



A front maintenance wall mount LED screen is a sleek, space-saving indoor display designed for easy upkeep and seamless integration. With a fine pixel pitch (1.2mm-3mm), it delivers vibrant visuals for ads, info, or decor. Bright (1,000-3,000 nits) and accessible from the front, it simplifies maintenance in tight spaces, offering dynamic content with a modern, flush-mounted aesthetic.



Front Maintenance Wall Mount LED Screen

(Robust and Weatherproof)

Specifications

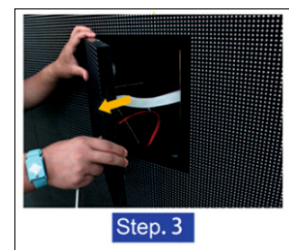
- ❖ **IP Rating:** A crucial specification for outdoor use. Look for a minimum of IP65 (front and rear), indicating strong protection against dust and water ingress from all directions. Higher ratings like IP67 or IP68 offer even greater protection.
- ❖ **Cabinet Size:** Dimensions of the weatherproof cabinet housing the modules. These are often designed with ventilation or cooling systems.
- ❖ **Cabinet Material:** Typically robust and corrosion-resistant materials like aluminum alloy or galvanized steel, MS with protective coatings to withstand outdoor elements.
- ❖ **UV Resistance:** The LED encapsulation and cabinet materials should be UV resistant to prevent degradation from prolonged sun exposure.
- ❖ **Accessibility for Maintenance:** Plan for safe and easy access for technicians to perform front maintenance, considering height and potential weather conditions.



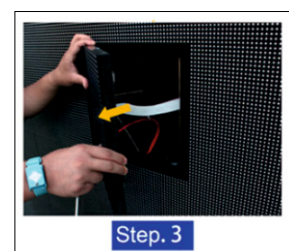
Use Special Tool
for module maintenance



Step. 1



Step. 3



Step. 3

Hoarding is a mental health disorder characterized by a persistent difficulty discarding or parting with possessions, regardless of their actual value. This difficulty leads to the accumulation of possessions that clutter living areas and substantially compromise their intended use.



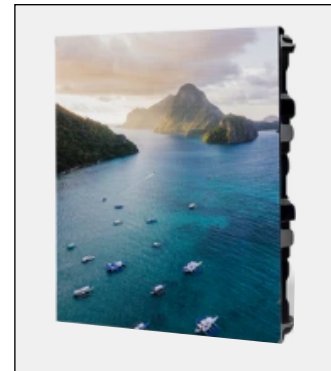
OOH Advertising Display Bord

Specifications

- ❖ Pixel Pitch: P8, P6.6, P6, P5 & P4 For OOH Advertising
- ❖ Brightness: ≥ 6500 nits- High brightness for daytime visibility.
- ❖ Viewing Angle: $140^{\circ}/140^{\circ}$ - Wide angles for better visibility from different positions.
- ❖ IP Rating: IP65 (Front), IP54 (Back) - Protection against dust and water.
- ❖ Power Supply: 220V & 440V AC
- ❖ Control System: Allows for remote content updates.
- ❖ Operating Temperature: 20°C to $+60^{\circ}\text{C}$ - Suitable for outdoor conditions.
- ❖ Lifespan: $\geq 100,000$ hours - Long operational life
- ❖ Refresh Rate : 3840Hz or 7680Hz.

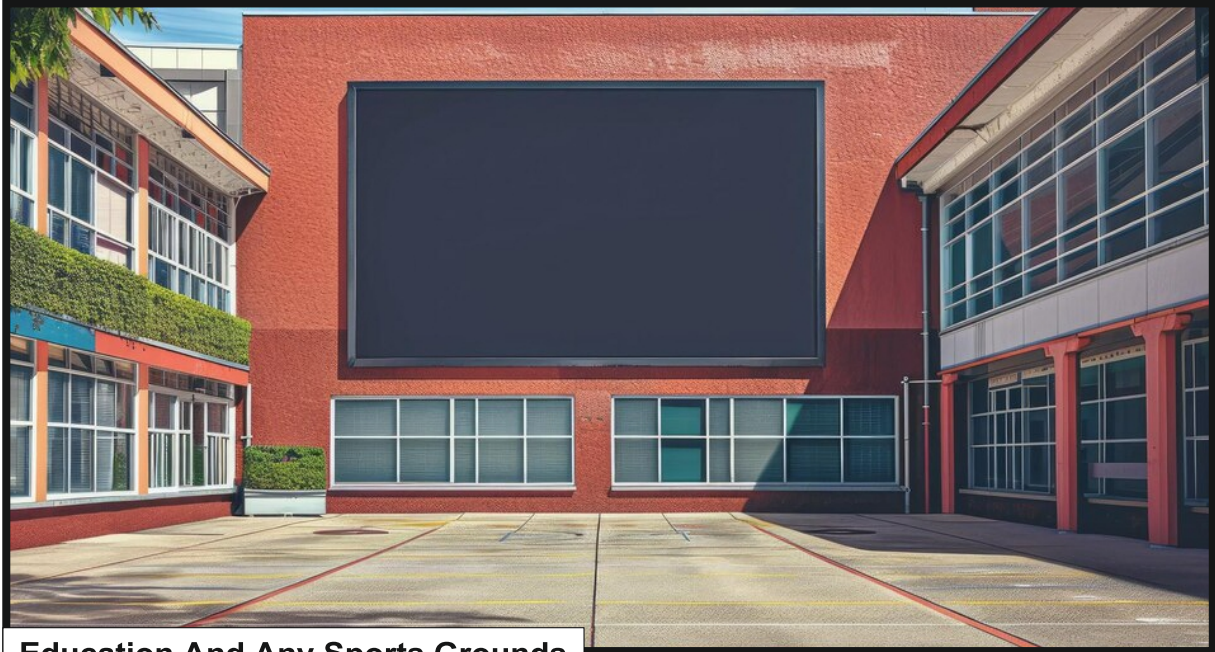
Brands

- ❖ We Prefer Nation star,
- ❖ king light,
- ❖ Hongsheng
- ❖ For Outdoor OOH Advertising



ALUMINUM DIE-CASTING
(960 x 960. mm)

A school and college LED screen is a versatile indoor display designed to inform and engage students, staff, and visitors. With a pixel pitch of 1.5mm-4mm, it delivers clear visuals for announcements, schedules, or educational content. Bright (1,000-3,000 nits) and user-friendly, its modular design ensures easy installation, fostering dynamic communication and enhancing the learning environment.



Education And Any Sports Grounds

Specifications

- ❖ **Installation:** Modular, front/rear-serviceable panels
- ❖ **Control:** Remote management, HDMI/USB/Wi-Fi compatible
- ❖ **Area:** Sufficient space allocated for the intended sports and educational activities, complying with local regulations and guidelines. **Zoning:** Clear demarcation between different sports fields, play areas, and educational zones.
- ❖ **Accessibility:** Pathways and access points should be accessible to all, including those with disabilities, adhering to relevant accessibility standards.
- ❖ **Orientation:** Consideration of sunlight and wind direction for optimal play and comfort.
- ❖ **Drainage:** Proper drainage systems to prevent waterlogging, especially important in a region like

Pune with monsoon season.



3/5/7 Years

Head Banner Display Screen

A Head Banner Display Screen for outdoor shops is a long, often narrow LED screen typically mounted above the storefront to display advertising messages, promotions, shop names, and other information to attract passersby.

Designed for wall mounting above the shop entrance. The mounting structure should be robust and secure, capable of supporting the weight of the screen and withstanding wind loads. Consider the facade of the building and local building codes.



Head Banner Display Screen

Specifications

- ❖ **Purpose:** Typically used for branding, showcasing key messages, highlighting promotions, providing essential navigation links, or displaying announcements.
- ❖ **Placement:** Located at the very top of the webpage, often spanning the full width of the viewport.
- ❖ **Content:** Can include a variety of elements such as:
 - ❖ **Logo:** Company or brand identifier.
 - ❖ **Company Name/Tagline:** Brief textual representation of the brand.
 - ❖ **Navigation Menu:** Links to key sections of the website.
 - ❖ **Search Bar:** Functionality for users to search the website.
 - ❖ **Call-to-Action (CTA):** Buttons or links encouraging specific user actions.
 - ❖ **Promotional Messages:** Information about current offers or events.
 - ❖ **Social Media Links:** Icons linking to the brand's social media profiles.
 - ❖ **Contact Information:** Phone number or email address.
 - ❖ **Visuals:** Images, illustrations, or subtle animations.
- ❖ **Responsiveness:** Must adapt seamlessly to various screen sizes (desktop, tablet, mobile) without compromising usability or visual appeal.
- ❖ **Performance:** Should be optimized for fast loading times to avoid negatively impacting website performance.
- ❖ **Accessibility:** Should adhere to accessibility guidelines (e.g., providing alt text for images, ensuring sufficient color contrast) to be usable by individuals with disabilities.
- ❖ **Design:** Should align with the overall website design and branding guidelines in terms of colors, fonts, and visual style.

Outdoor LED Screen

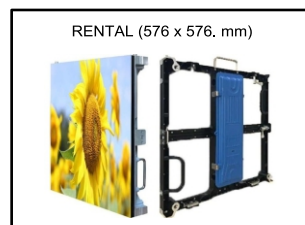
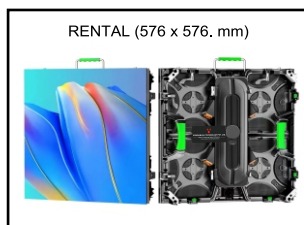
A Rental LED Screen is a portable, modular display designed for temporary setups at events, concerts, trade shows, or exhibitions. Built for quick assembly and disassembly, these screens offer high durability, vibrant visuals, and flexibility for various stage or booth configurations.



Rental LED Screen

Specifications

- ❖ Pixel Pitch: 1.9mm to 10mm (e.g., P2.6, P3.91, P4.81)
- ❖ Brightness: 6000 nits (indoor/outdoor)
- ❖ Refresh Rate: 1920–3840 Hz
- ❖ Panel Size: Typically 500x500mm or 500x1000mm Weight: ~7–12 kg/panel
- ❖ Cabinet Material: Die-cast aluminum for lightweight durability
- ❖ Operating Temperature: -20°C to +50°C IP Rating: IP30 (indoor) or IP65 (outdoor)
- ❖ Installation: Fast-lock system, hanging, stacking, or truss-mounted
- ❖ Control System: NovaStar, Colorlight, or similar
- ❖ Power Consumption: Avg. 50–140 W/panel



An LED Van is a mobile vehicle fitted with large, high-resolution LED screens for dynamic advertising, event promotions, live streaming, or public announcements. Designed for mobility and visibility, these vans are equipped with durable, weatherproof displays ideal for outdoor campaigns, roadshows, or temporary setups.



LED Van

Specifications

- ❖ Screen Size: 2m x 1.5m to 6m x 3m (single or dual-sided)
- ❖ Pixel Pitch: 4mm to 10mm (e.g., P4, P5, P6.67)
- ❖ Brightness: 6000 nits for daylight visibility
- ❖ Refresh Rate: 1920–3840 Hz
- ❖ Display Type: Full-color SMD LED
- ❖ Power Supply: Vehicle battery + generator (12V/24V DC or 220V AC)
- ❖ Weight: Varies by vehicle (typically 3.5–7.5 tons)
- ❖ Operating Temperature: -20°C to +50°
- ❖ CIP Rating: IP65 (weatherproof)
- ❖ Control System: NovaStar, LINSN, or cloud-based remote control
- ❖ Additional Features: Hydraulic lift/rotation (optional), GPS tracking, audio system

Variable Message Signs (VMS) are electronic traffic signs that display real-time information to drivers. They are used to communicate dynamic messages about traffic conditions, road closures, safety alerts, and other relevant information to improve traffic flow and safety.



VMS

Specifications

- ❖ Size: Varies greatly depending on the application.
- ❖ Brightness: High visibility in all conditions, often with automatic adjustment.
- ❖ Communication: Uses protocols like GSM/GPRS, fiber optic, or Ethernet.
- ❖ Environmental: Weatherproof and durable for outdoor use.
- ❖ Control: Managed by software to display dynamic messages.
- ❖ Display: LED technology, with varying pixel pitch for resolution.

Can be monochrome or full-color.



A Production Display Board is a visual tool used in manufacturing and industrial environments to show real-time production data. It helps teams track progress, monitor key performance indicators (KPIs), identify bottlenecks, and improve overall efficiency on the production floor.



Production Display Board

Specifications

- ❖ **Display Technology:** LED (most common for high visibility) or LCD.
- ❖ **Size & Resolution:** Varies based on viewing distance and amount of information. Common sizes range from small desktop displays to large wall-mounted boards. Resolution depends on the display size and desired detail.
- ❖ **Color Options:** Monochrome (often red, green, or amber), multi-color, or full-color depending on the information being displayed and visual requirements.
- ❖ **Brightness:** Needs to be sufficient for the lighting conditions in the production environment. LED boards typically offer higher brightness.
- ❖ **Communication Protocol:** The language the board uses to communicate with other systems.
- ❖ **Software Compatibility:** Ability to integrate with various Manufacturing Execution Systems (MES), Enterprise Resource Planning (ERP) systems, and other data sources.
- ❖ **Mounting Options:** Wall-mounted, hanging from the ceiling, or placed on a stand.
- ❖ **Power Supply:** Standard AC power (e.g., 100-240V).
- ❖ **Operating Temperature:** Designed for industrial environments, so a wider temperature range is often required.
- ❖ **Customization:** Ability to display specific data fields, layouts, and alerts based on user needs.
- ❖ **Durability:** Built to withstand the conditions of a production floor (e.g., dust, vibrations).

The MPCB is the primary regulatory body in Maharashtra responsible for implementing various environmental legislations to prevent, control, and abate pollution of water, air, and land, as well as managing hazardous waste and promoting environmental protection within the state.



Maharashtra Pollution Control Board (MPCB)

Specifications

- ❖ **Legal Framework:** Operates within the defined legal framework of the environmental acts and rules enacted by the Government of India and the State of Maharashtra.
- ❖ **Organizational Structure:** Comprises a Chairman, Member Secretary, and other member officials, along with regional and sub-regional offices across Maharashtra for decentralized operations and enforcement.
- ❖ **Technical Expertise:** Employs scientific and technical personnel to conduct monitoring, inspections, and provide expert opinions on pollution control matters.
- ❖ **Infrastructure:** Maintains laboratories for environmental sample analysis and utilizes IT infrastructure for data management, online consent application processes, and public communication.
- ❖ **Stakeholder Engagement:** Interacts with industries, local bodies, non-governmental organizations, and the general public to address environmental concerns and promote participation in pollution control efforts.
- ❖ **Transparency and Accountability:** Strives for transparency in its operations through public notices, hearings, and online availability of information. It is accountable to the Government of Maharashtra and the judiciary for its actions.

The Central Pollution Control Board (CPCB), established in 1974 under the Water (Prevention and Control of Pollution) Act, is a statutory organization under the Ministry of Environment, Forest and Climate Change. It was later entrusted with powers and functions under the Air (Prevention and Control of Pollution) Act of 1981.



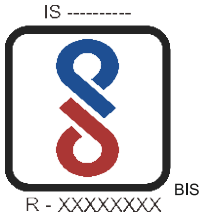
Central Pollution Control Board (CPCB)

Specifications

- ❖ Air Quality Standards: Defining permissible levels of various air pollutants (e.g., PM2.5, PM10, SO2, NO2, CO, O3) for ambient air.
- ❖ Water Quality Standards: Setting standards for the quality of water in different water bodies for various uses (e.g., drinking, irrigation, industrial).
- ❖ Effluent Discharge Standards: Specifying the permissible limits of pollutants that industries can discharge into water bodies. These are often industry-specific (MINAS - Minimal National Standards).
- ❖ Emission Standards: Defining the allowable limits of air pollutants that industries can release into the atmosphere, also often industry-specific.
- ❖ Noise Standards: Setting limits for noise levels from various sources like industries, vehicles, and construction activities.
- ❖ Waste Management Guidelines: Providing guidelines for the management and handling of different types of waste, including hazardous waste, municipal solid waste, biomedical waste, plastic waste, and e-waste.
- ❖ Technical Guidelines and SOPs: Developing standard operating procedures and technical guidelines for various environmental monitoring and pollution control activities.

**All Led Screen Supporting Structures
Are Certified By Structural
Consultants & Structural Engineers.**

Certification



+91 9545 030 123

+91 9168 040 123

+91 9561 790 123

www.vishwanjali.com

vishwanjalit@gmail.com

info@vishwanjali.com

Head Office : S/R NO 46/15, Near Jadhavar School, Manaji Nagar, Narhegaon, Pune - 411041