



VISHWANJALI TECHNOLOGY PVT. LTD.[®]

———— Where Technology Makes Difference ————



**Indoor & Outdoor LED Display Screen
Manufacturing company**

About Us

Established in 2014, Vishwanjali Technology Pvt. Ltd. has rapidly emerged as a key player in the Indian market for LED displays. Headquartered in Pune, we specialize in the manufacturing, assembly, and end-to-end servicing of a wide range of indoor and outdoor LED screens. Our commitment to quality and innovation has enabled us to build a strong reputation for delivering durable, low-maintenance products that cater to a diverse clientele, including the hospitality, education, retail, software, manufacturing, and government sectors. At Vishwanjali, we believe in the power of teamwork and precision. Our state-of-the-art production facility is equipped with advanced machinery and rigorous quality control systems to ensure that every product meets the highest standards of excellence. From the initial procurement of raw materials to the final delivery and installation, our experienced professionals work in seamless coordination to ensure timely delivery and complete customer satisfaction.

Vision

We envision a future where we provide a platform for those in need, creating opportunities for collaboration and mutual growth. Our goal is to grow as a company that is synonymous with high-quality manufacturing and unparalleled service in the LED display industry.

Mission

Our mission is to drive company growth through advanced engineering, innovative design, and efficient manufacturing. We are committed to developing less resource-intensive and more efficient end-products for both individuals and corporations, making cutting-edge technology accessible to all.

Core Values

Integrity and Trust: We believe in conducting our business with the utmost integrity and building lasting relationships based on trust.
Innovation: We are constantly exploring new technologies and designs to stay at the forefront of the industry.
Quality: We are committed to delivering products and services that meet the highest standards of quality and reliability.
Customer-Centric Approach: We prioritize the needs of our clients and strive to provide them with the best possible solutions and support.

Products We Are Dealing With

- ❖ Indoor & Outdoor LED Screen
- ❖ Advertising Display LED Screen
- ❖ Smooth Curve LED
- ❖ Sharp Curve LED
- ❖ 3D Naked Eye LED Screen
- ❖ Active Pixel LED
- ❖ Transparent And Flexible LED
- ❖ Scrolling Displays
- ❖ Commercial Displays
- ❖ Digital Posters
- ❖ Digital LED Signage
- ❖ Video Walls & Rental Screens
- ❖ Interactive Flat Panel Display (IFPD)
- ❖ Interactive White Board / Interactive Display
- ❖ Touch Displays
- ❖ Interactive Touch Panel
- ❖ Non-touch Displays
- ❖ LED Standee
- ❖ Circle Led
- ❖ VMS Display Board
- ❖ MPCB Display Board
- ❖ CPCB Display Board
- ❖ Kiosks
- ❖ LED Van

Indoor Pixel(P)

P1, P1.2, P1.5, P1.8, P2, P2.5, P3, P3.9, P4, P4.8, P5

Outdoor Pixel(P)

P2.5, P3, P3.9, P4, P4.8, P5, P6, P6.6, P8, P10



Indoor LED Screen

Indoor LED screens offer a versatile and visually appealing solution for various indoor display needs providing high-quality content delivery and enhanced viewer experiences.



Meeting Room (Board Room) LED Screen



Conference Room Active LED



Reception LED Display



Auditorium LED Screen



Studio LED Screen



Active LED Video Wall

INDOOR DIE CASTING CABINET SIZES



(640 x 480 mm)



(640 x 640 mm)



(640 x 640 mm)

MODULE SIZE 320 X 160 Mm

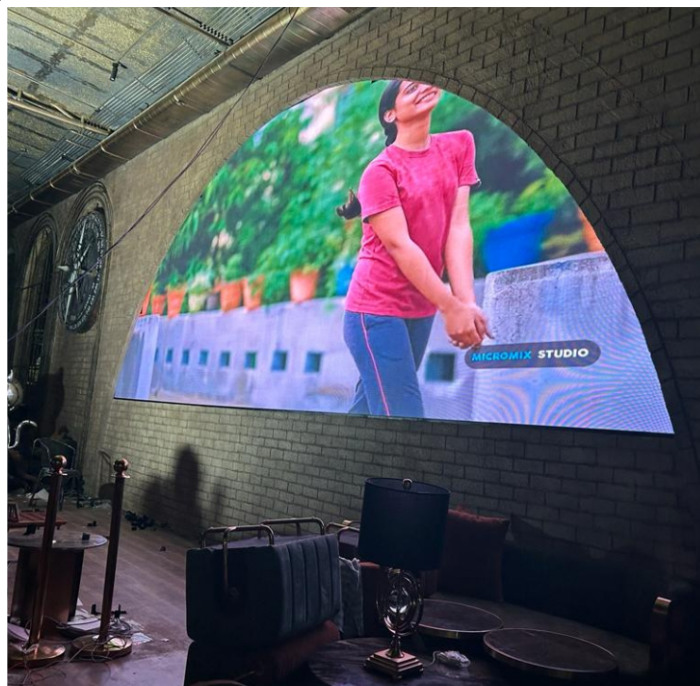
Pixel Pitch: P1.2, P1.5, P1.8, P2, P2.5, P3
for clear visuals

Brightness: 600-1200 nits (cd/m²) for clear display

Refresh Rate: ≥3840Hz for flicker-free video

Customised Smooth Curve LED Display

Smooth curve LED displays offer an innovative way to engage audiences and create memorable visual experiences by adding depth and realism to content without the need for additional viewing equipment.



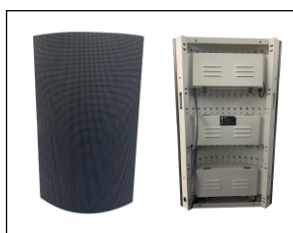
Half Circle LED Screen



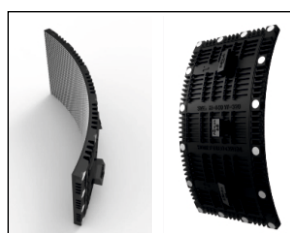
Smooth Curve Outdoor LED Screen



Smooth Curve Anamorphic Outdoor LED Screen (3D LED)



SMOOTH CURVE CABINET



FLEXIBLE LED SCREEN

Pixel Pitch: P2.5, P3, P4, P5, P6, P8
(Indoor And Outdoor)

Brightness: 5000-6000 nits (cd/m2)

Refresh Rate: 3840-7680 Hz

3D L-Shape Curve LED Screen

3D L-shape curve LED screens offer a visually striking and Immersive way to display content providing a unique viewing experience that captivates audiences and enhances engagement.



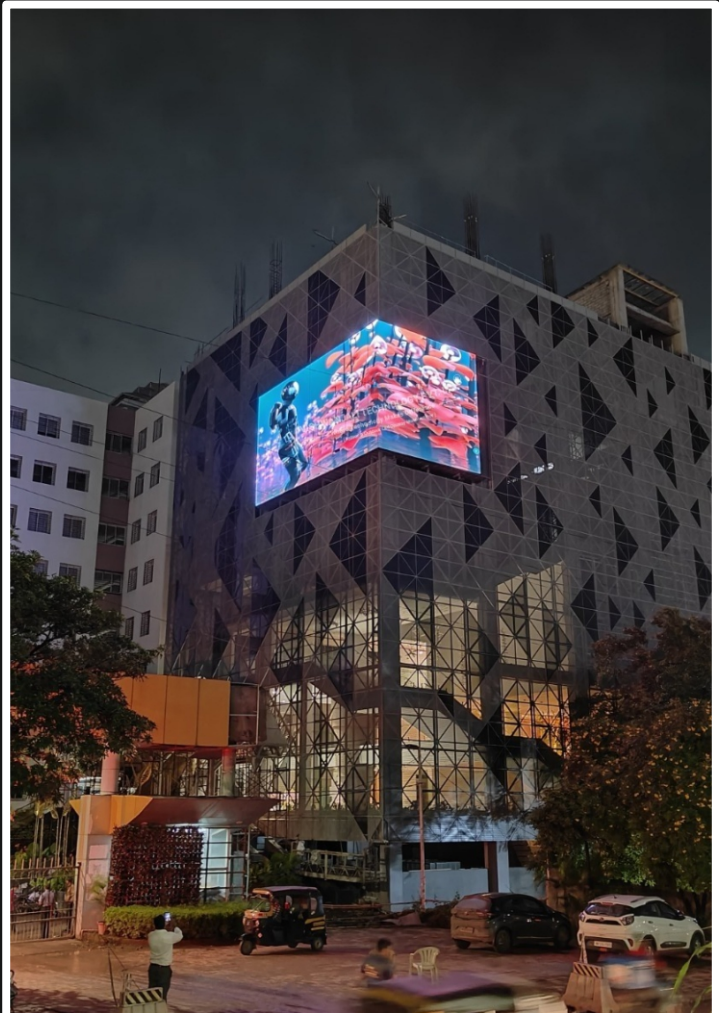
3D L-Shape Outdoor LED screen



L-Shape Outdoor LED screen



L-Shape Outdoor LED screen



3D L-Shape Outdoor LED screen



L-SHAPE CURVED CABINET



L-SHAPE CURVED CABINET

Pixel Pitch: 1.2mm to 8mm
(e.g., P2.5, P3, P3.9, P4, P4.8, P5, P6, P6.6, P8, P10)

Brightness: 6000 nits (indoor/outdoor)

Refresh Rate: 1920–3840 Hz

Outdoor LED Screen

Outdoor LED screens are robust display solutions designed to withstand various weather conditions while delivering high-quality content in outdoor environments.



Outdoor Wall Mount LED Screen



Outdoor Wall Mount LED Screen



Outdoor Video Wall LED Display



MS (960 x 960 mm)



ALUMINUM DIE-CASTING (960 x 960 mm)

Pixel Pitch: P2.5, P3, P4, P5mm for sharp, close-range visuals

Brightness: 5500-6000 nits (cd/m2) for clear visibility

Refresh Rate: ≥ 3840 -7680Hz for smooth video

Outdoor LED Screen

An outdoor LED screen is a robust, high-brightness digital display designed to show vibrant content clearly in outdoor environments, even in direct sunlight. It's built to withstand various weather conditions like rain, heat, and cold.



Outdoor Advertising LED Screen (OOH)



Digital Signage Board (Head Banner)



Outdoor Active LED Screen



Outdoor LED Screen



ALUMINUM DIE-CASTING (960 x 960 mm) ALUMINUM DIE-CASTING (960 x 960 mm)

Pixel Pitch: P2.5, P3, P4, P5 for sharp, close-range visuals

Brightness: 5500-6000 nits (cd/m²) for clear visibility

Refresh Rate: ≥3840-7680Hz for smooth video

Unipole LED Screen

A UNIPOLE LED SCREEN is an outdoor digital display system featuring a large LED screen mounted on a tall, solitary pole. Designed for maximum visibility, it delivers dynamic, high-impact advertising and information to a broad audience in high-traffic urban and roadside locations



Outdoor Single Pole LED Screen



Outdoor Pole LED Screen



Outdoor Multi Pole LED Screen



Outdoor Two Pole LED Screen



MS (960 x 960 mm)



ALUMINUM DIE-CASTING (960 x 960 mm)

Pixel Pitch: P2.5, P3, P4, P5, P6.6, P8, or P10 (smaller pitch for higher resolution).

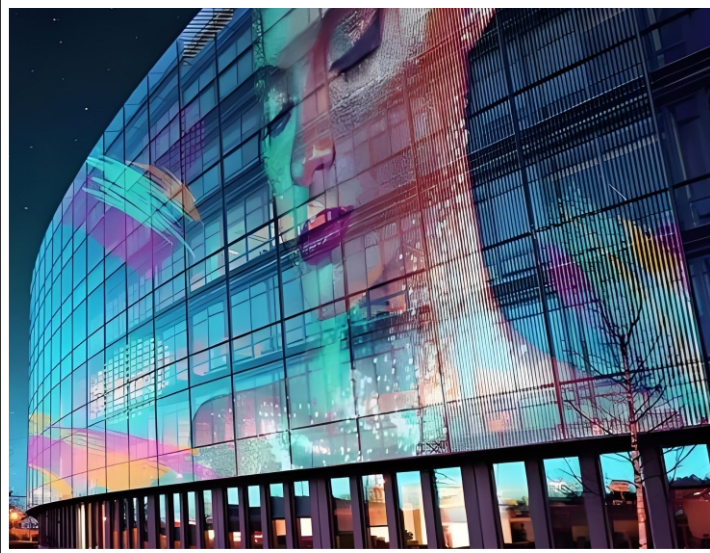
Structure: Galvanized steel pole/Metal Steel, concrete foundation, wind resistance up to 120–150 mph

Brightness: 5500-6000 nits for sunlight readability.

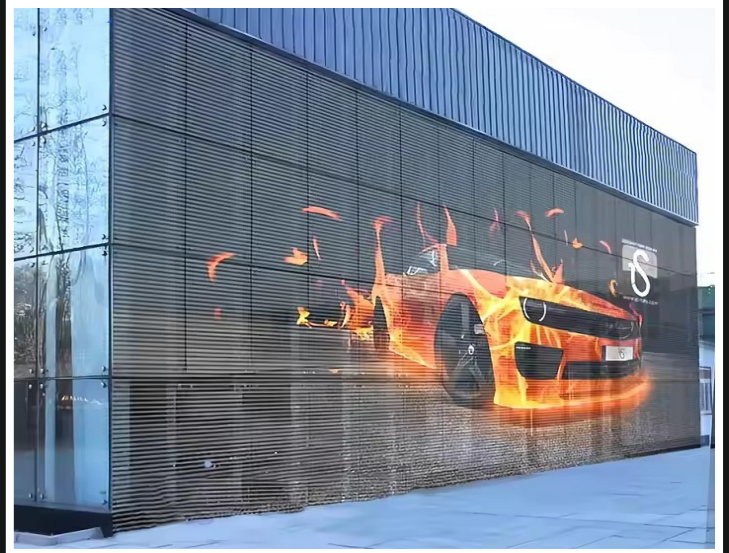
Flexible Transparent And Film LED Screen

Transparent LED film Transparent LED film is a cutting-edge display technology that features LEDs embedded in a thin, transparent film. This film can be applied to various transparent surfaces like glass, acrylic, or other see-through materials, transforming them into dynamic digital displays without obstructing the view when the display is off

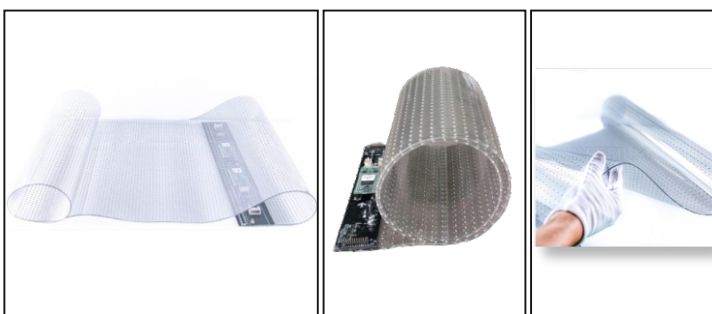
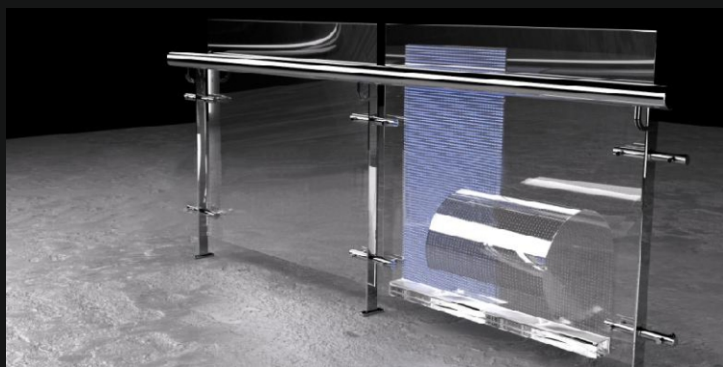
Film LED



Transparent LED



- ❖ Invisible PCB & Mesh Technology, Super high transparency up to more than 95%. Slim & Soft for Creative Design, Ultra-thin and ultra-light Easy Installation & Anti-UV, self-adhesive Film which paste on the glass without frames or other gaps.
- ❖ Flexible during installation, the size and layout of the film can be customized to suit different installation areas. Sufficient brightness, Excellent color performance.



Digital Indoor & Outdoor LED Standee

An LED standee is a portable digital display screen, often used for advertising or information purposes. It typically features a bright LED panel capable of showing dynamic content like images, videos, and text. They are common in retail spaces, events, and public areas attracting attention and conveying messages effectively.



P1.5 Indoor



P2 Indoor



P2.5 Outdoor

Digital Indoor & Outdoor LED Standee

Pixel: P4, P3, P2.5, P2, P1.8, P1.5

High Refresh Rate: 3840, 5760, 7680

Sizes: 3 x 5 ft., 4 x 6 ft. & Customised

Connectivity USB, LAN, Wifi, HDMI & Cloud

Common Applications:

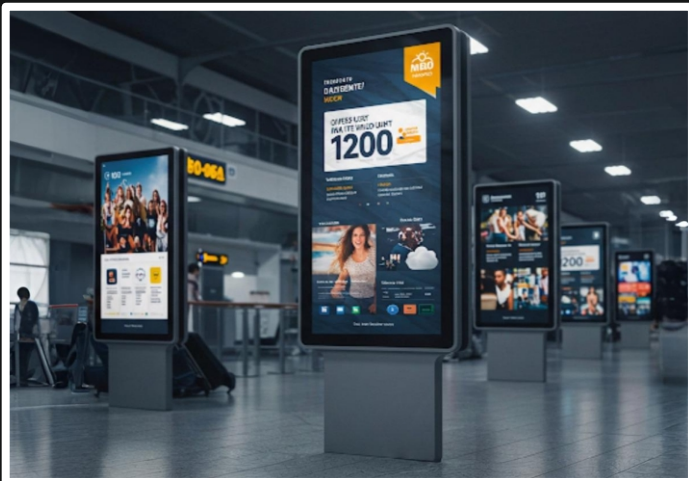
- Retail advertising
- Exhibitions and trade shows
- Hotel lobbies
- Restaurant menus
- Event information displays
- Corporate reception areas

Interactive Flat Panel Display (IFPD)

An Interactive Flat Panel Display (IFPD) is a large, touchscreen-enabled digital display designed for collaborative and interactive environments like classrooms, meeting rooms, and training centers. It combines high-definition visuals with multi-touch capabilities, functioning as an advanced interactive whiteboard. IFPDs support dynamic presentations, real-time annotations, and wireless content sharing, replacing traditional projectors and whiteboards with a versatile, user-friendly solution for education and business.



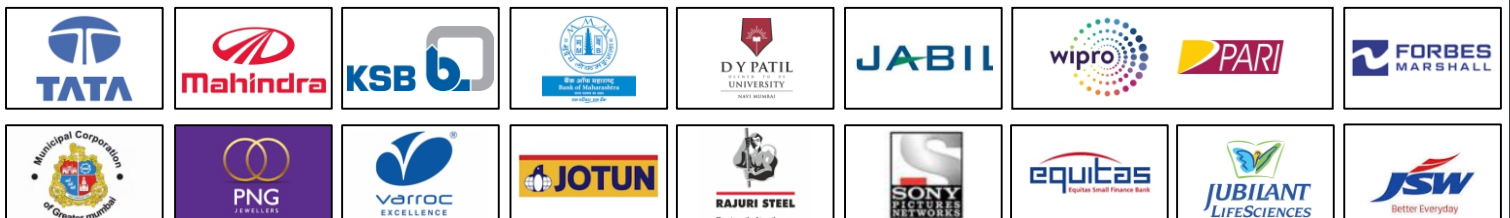
Digital Signages With CMS



LED Van



Our Premium Clients





VISHWANJALI TECHNOLOGY PVT. LTD.®

Where Technology Makes Difference

(Indoor & Outdoor Led Display Manufacturer)



**All LED Screen Supporting Structures Are Certified By
Structural Consultants And Structural Engineers.**

Certification Of Company

Company Registered



☎ +91 9545 03 0123 ☎ +91 9168 04 0123 ☎ +91 9561 79 0123 ✉ info@vishwanjali.com

📍 Head Office : s/r No. 46/15, Near Bank of Maharashtra, Manaji Nagar, Narhe, Pune 411041

सत्यमेव जयते

www.vishwanjali.com